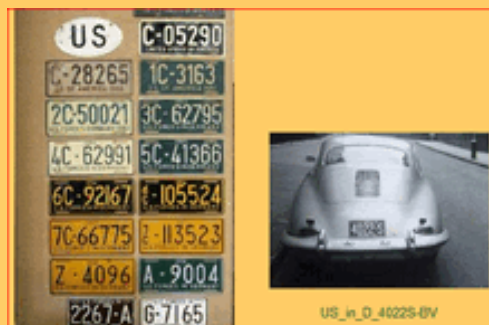


FORCES US en ALLEMAGNE - in GERMANY FRANCOPLAQUE PHOTOS - Album pages : 1



\_HISTOR



\_LARGE



a1\_GERMAN\_TYPE\_2007



a2\_EXPORT\_TO\_US



b1\_TEMPOR\_2008



p1\_PERS\_2000\_EUROSIZ



p2\_PERS\_US\_SIZE



p3\_OFFICIAL



p4\_NON\_APPROP\_FUND



p5\_TRAILER

[UP](#) FORCES US en ALLEMAGNE - in GERMANY FRANCOPLAQUE PHOTOS - Album pages : 1



D 1Mds ES3954-Mystery eBay-MM\_Eu156

1940s



US\_in\_Eur\_1946-E4568c-MM\_Eu150 US\_in\_Eur\_1947-E16201-MM\_Eu145

1946\_EUR\_THEATER



US\_in\_Eur\_1948-49\_eB US\_in\_Eur\_1948-C17875c-BB\_Eu150

1948\_EUR\_THEATER



US\_in\_D\_1950-C21686-eBay\_Eu150 US\_in\_D\_1950\_eB

1950



US\_in\_D\_1951-1C2647-JFax\_Eu150 US\_in\_D\_1951-M33311-white-red-PP\_Eu

1951



US\_in\_D\_1952-2C31654\_BB US\_in\_D\_1952-2C35022-JH\_Eu146

1952



US\_in\_D\_1953-3C05775c-JFax\_Eu150 US\_in\_D\_1953\_eB

1953



US\_in\_D\_1954-4C29048c-JFax\_Eu150 US\_in\_D\_1954\_EBay

1954



US\_in\_D\_1955-5H3590\_BB US\_in\_D\_1955\_eB

1955



US\_in\_D\_1956-6C52133c-JW\_Eu150 US\_in\_D\_1956-6C94244\_BB

1956



US\_in\_D\_1957-7C32637c-TSt\_Eu150 US\_in\_D\_1957

1957



US\_in\_D\_1958-J2755c-JW\_Eu150 US\_in\_D\_1958-R3087c-BB\_Eu150

1958



1959



1960



1961



1962



1966



1973



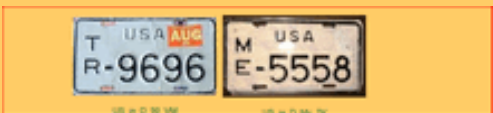
1982



1990



EXCHANGE



MOTORCYCLE



OFFICIAL

[UP](#) FORCES US en ALLEMAGNE - in GERMANY FRANCOPLAQUE PHOTOS - Album pages : 1



US\_in\_D\_13\_BL



US\_in\_D\_4022S-BV



US\_in\_D\_Bavr6\_10



US\_in\_D\_Eur-Exchange-Forces-Area\_Trk\_JSc



US\_in\_D\_HK-HF-0694-BV



US\_in\_D\_MA-T-00091\_BV



US\_in\_D\_RN4111\_VB



US\_in\_D\_TSP-00218\_BV



US\_in\_D\_2009\_Heidelberg\_HK\_MM



US\_in\_D\_2011\_Bamberg\_BV



US\_in\_D\_2011\_KL-KU\_BV



US\_in\_D\_2011\_KL\_BV



US\_in\_D\_Heidelberg\_MM

[UP](#) FORCES US en ALLEMAGNE - in GERMANY FRANCOPLAQUE PHOTOS - Album pages : 1



US\_in\_D\_2009-export-SHAA277-MM-63457\_Eu149



US\_in\_D\_2010-export-QQ-AA264DM\_Eu153



US\_in\_D\_2010-export-QQ-AB914RBs\_Eu153



US\_in\_D\_2010-export-QQ-AC124RBs\_Eu153



US\_in\_D\_2010-export-QQAP402-RBs\_Eu157



US\_in\_D\_2011\_export\_JOP



US\_in\_D\_2008-temp-GK00001-  
JSh\_Eu148



US\_in\_D\_2008-temp-H00013-MM-  
63455\_Eu149



US\_in\_D\_2008-temp-H00171-  
MM\_Eu157



US\_in\_D\_2008-temp-K00418-RBs-  
61068\_Eu149



US\_in\_D\_2008-temp-W00052-PPk-  
63456\_Eu149



[UP](#) FORCES US en ALLEMAGNE - in GERMANY FRANCOPLAQUE PHOTOS - Album pages : 1



US\_in\_D



US\_in\_D\_02\_VM



US\_in\_D\_2000-ADAD110-BUR\_Eu143



US\_in\_D\_2000-norm-ADDR698f-UK\_Eu150



US\_in\_D\_AD-AW\_JS73



US\_in\_D\_ADAB481



US\_in\_D\_Detail\_2000\_AD\_MM



US\_in\_D\_Euroband\_Detail\_JE



US\_in\_D\_Nato\_Euroband\_Detail



US\_in\_D\_Shield\_JE

[UP](#) FORCES US en ALLEMAGNE - in GERMANY FRANCOPLAQUE PHOTOS - Album pages : 1



US\_in-D\_AF-2-lines\_JE



US\_in-D\_HK-2-lines\_JE



US\_in\_D\_2000-HKAX980-JW\_Eu143



US\_in\_D\_2000-mc-HKML355-  
HS\_Eu140



US\_in\_D\_2000-norm-AFAH713r-  
JW\_Eu150



US\_in\_D\_2000-norm-HKHG708-  
TH\_Eu150



US\_in\_D\_2000\_AF-means-2-  
lines\_1\_MM



US\_in\_D\_2002\_AF-2-lines\_JE



US\_in\_D\_2002\_HK-2-line\_JE



US\_in\_D\_2002\_HK-2-lines\_JE



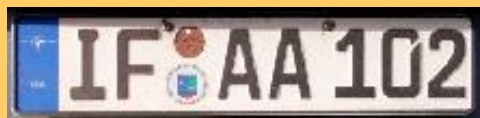
US\_in\_D\_HK-HF-0694\_BV



US\_in\_D\_HK\_JS48



US\_in\_D\_HK\_VM



US\_in\_D\_2000-IFAA102-BUR\_Eu143



US\_in\_D\_2000-official-  
IFAG109MM\_Eu153



US\_in\_D\_g28\_Eu133



US\_in\_D\_2000-NAF-HKNA382-MM-63451\_Eu149



US\_in\_D\_2000-NAF-MM\_Eu149



US\_in\_D\_NAF-Organizations\_MM



US\_in\_D\_2000-trl-HK-TR111-MM-63452\_Eu149



US\_in\_D\_Trailer119\_MM



US\_in\_D\_Trailer337\_MM